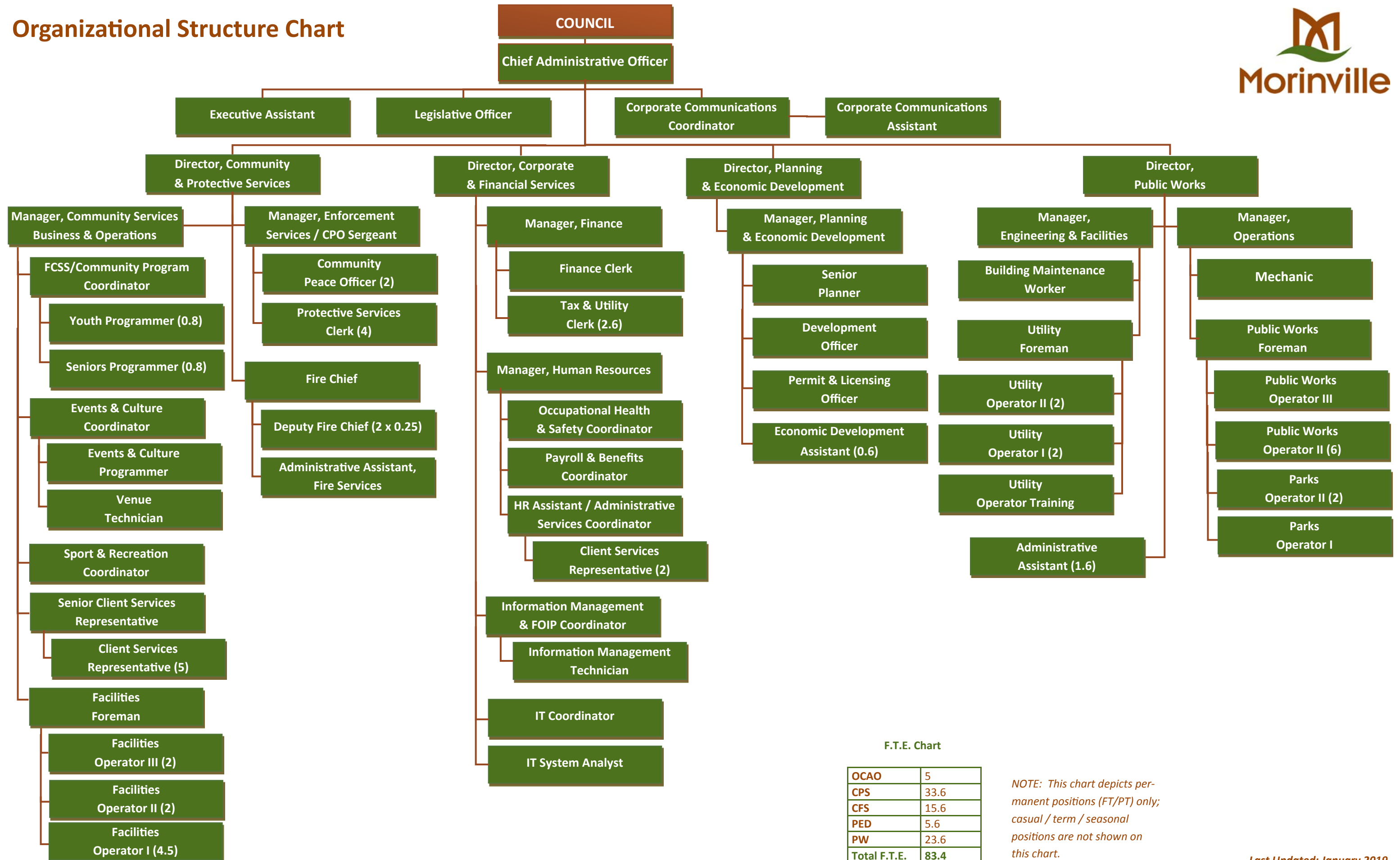


# Organizational Structure Chart



F.T.E. Chart

OCAO	5
CPS	33.6
CFS	15.6
PED	5.6
PW	23.6
<b>Total F.T.E.</b>	<b>83.4</b>

NOTE: This chart depicts permanent positions (FT/PT) only; casual / term / seasonal positions are not shown on this chart.