

Snow and Ice Control Policy

Policy Number: 7/2026
Approval Date: January 13, 2026
Supersedes Policy: Snow and Ice Control Policy - CP5/2024

SECTION A

1.0 Policy Purpose

- 1.0 The purpose of this Policy is to establish Council-approved priorities and service standards for snow and ice control within municipal resources, to support safe and reliable transportation for motorists and pedestrians across Morinville during winter conditions as reasonably practical.

2.0 Definitions

- 2.0 "Accumulated Snow Depth" is the total depth of snow accumulated on a roadway or trail surface that has fallen since the surface's last clearing.
- 2.1 "Arterial Roads" refer to major thoroughfares through Morinville.
- 2.2 "Collector Roads" refer to roads which connect residential neighbourhoods together and include the industrial area.
- 2.3 "Compacted Snow Depth" is the depth of snow that has been compressed and densified due to vehicle traffic, repeated freeze-thaw cycles, or extended time on the surface.
- 2.4 "Extreme Cold Weather" is defined as -30°C Windchill temperature or colder.
- 2.5 "Ice-etching" is the use of motor-grader or plow equipment equipped with serrated, carbide, ice-blade, or similar attachments designed to roughen, fracture, or remove glazed ice on paved road surfaces. Ice-etching will only be performed when air temperatures are -12 °C or lower to ensure effectiveness.
- 2.6 "Main Roads" refer to the high traffic volume roadways, which are the main roadways for commuters and motorists entering or exiting Morinville. Examples

include 100 Street from the north to south boundary and 100 Avenue extending from the east to west boundary of Morinville.

- 2.7 "Municipal Parking Lots" are Morinville-owned or leased parking lots that provide support to the public, Morinville employees, and community agencies.
- 2.8 "Neighbourhood Collector Roads" are roadways that provide property access and traffic circulation within neighbourhoods, linking Residential Roads and lanes to Arterial Roads. They facilitate movement within and between neighbourhoods while accommodating moderate traffic volumes and essential service access.
- 2.9 "Residential Roads" refer to residential neighbourhood streets, including alleyways and cul-de-sacs.
- 2.10 "Roadway Blading" is a corrective snowpack-management operation that uses grader-mounted blades to plane compacted snow and ice when rutting exceeds acceptable operational thresholds, ensuring a consistent surface profile and improved traction.
- 2.11 "Service Target for Completion" means the amount of time taken to complete the task. The target completion time outlined for each initiated operation starts once snowfall has stopped and the previous priorities have been completed.
- 2.12 "Windrow" snow plowed into a long continuous pile for storage or to facilitate removal.
- 2.13 "Zone" is a specific area of Morinville which will be scheduled for snow clearing and progresses sequentially from Zone A to Zone E, and is rotated fairly.

3.0 Policy Statements

- 3.1 Snow and ice control shall be managed within specified service levels, standards, and priorities to provide motorists and pedestrians with roads, sidewalks, trails, and parking lots that are as safe as reasonably possible under winter conditions.
- 3.2 Snow and ice control shall be delivered within Council's approved budget, staffing and equipment resources, and extreme weather conditions may impact service levels.
- 3.3 The system of snow and ice control is a reasonable allocation of budgetary resources, Morinville personnel and equipment, and considers other social and budgetary priorities.

3.4 Service Limitations & Risk Context

- 3.4.1 Many conditions may impact the ability to carry out this Policy, including multi-day storms, severe cold temperatures, absent employees, equipment breakdowns, or other higher priority emergencies.

3.5 Risk & Liability Context

- 3.5.1 As a result of the budgetary allocations and service levels provided, there are inherent risks that shall be recognized where roadways and walkways may be slippery and/or snow-covered. Motorists and pedestrians must recognize the conditions and exercise good judgment, a high level of care, and safe travel speeds to traverse safely.

3.6 Snow control operations will be initiated as follows:

- 3.6.1 For Accumulated Snow Depths between 0 and 5 cm, and/or during icy road conditions, sanding of key intersections and removal of hazardous snow drifts on Main Roads will occur. The Service Target for Completion is 8 hours. These activities will be carried out as required, seven days a week.
- 3.6.2 For Accumulated Snow Depths between 5 and 10 cm, all main and arterial roads will be plowed, including designated emergency routes (RCMP, Fire Station, and EMS), and Town of Morinville facility parking lots will be cleared. The service target for completion is 24 hours. These operations will be carried out Monday through Friday between 6:00 a.m. and 2:30 p.m., excluding weekends and statutory holidays.
- 3.6.3 For Accumulated Snow Depths between 10 and 15 cm, all neighbourhood collector roads will be cleared. The service target for completion is 72 hours. These operations will be carried out Monday through Friday between 8:00 a.m. and 4:30 p.m., excluding weekends and statutory holidays.
- 3.6.4 For Compacted Snow Depths exceeding 10 cm, residential snow clearing operations will be initiated. The service target for completion is 10 days. This target represents the maximum allowable completion timeframe under complex winter conditions and does not delay higher-priority service levels, early intervention measures, or safety-driven activities.
- 3.6.5 Should a second snowfall occur prior to the completion of initial snow-clearing operations, the service target start time will be reset.
- 3.6.6 After a freezing rain event or other icy conditions arise, sanding of key intersections within approximately 30m of the intersection will occur.

- 3.6.7 When roadway rutting in residential areas reaches depths of 5-7.5 cm, a Roadway Blading program may be initiated. Roadway Blading will only be undertaken when air temperatures reach -12°C or lower to ensure effective snowpack removal and prevent equipment or surface damage.
 - 3.6.8 In cases of extreme ice conditions, aggregate chip application, in combination with Ice-Etching activities, may be undertaken.
 - 3.6.9 In rare instances of localized snow drifting and Windrowing, subsequent snow removal may be required when drifted snow reaches approximately 30–45 cm in depth or when drifting restricts roadway width or vehicle passage.
- 3.7 Depending on road conditions, a fair and equitable approach to residential snow removal shall be established through an alternating pattern of snow removal from the 5 Zones indicated (see Appendix 1).
- 3.8 Snow removal priorities, based on snow events and as resources permit, are defined as follows:

Priority #1: Main Roads (orange lines on Appendix 1 Map)

It consists of 100 Street and 100 Avenue. Trails and sidewalks (red lines) adjacent to Municipal-owned properties, St. Germain Place (Civic Hall), Morinville Community Cultural Centre, Morinville Leisure Centre, Meunier Maintenance Building (Infrastructure Services), St. Jean Baptiste Park, Don Found Fire Station (Fire Hall Bay access), will be cleared concurrently at this priority level using designated equipment. Municipal Parking Lots will be cleared, and snow will be pushed into piles, which will be removed after the snow event, once all other priorities are complete, or as time permits.

Priority #2: Arterial Roads (yellow lines on Appendix 1 Map)

Once the main roadways are complete, Arterial Roads will be cleared. Where possible, snow will be pushed to the side of the road that does not have a sidewalk, or to both sides of the road if there is a boulevard between the sidewalk and the curb.

Priority #3: Neighbourhood Collectors (blue lines on Appendix 1 Map)

Neighbourhood Collector Roads, including the industrial park, will be cleared to facilitate the movement of vehicles towards Arterial Roads. Where possible, snow will be pushed to the side of the road that does not have a sidewalk, or to both sides of the road if safe to do so.

Priority #4: Residential Streets / Lanes (green lines on Appendix 1 Map)

Once the main and Arterial Roads are complete, Residential Roads will be cleared in accordance with the Zones outlined on the enclosed map. Morinville has been divided into five Zones, which are scheduled on a rotating basis. For example, Zone 1 will be cleared first, followed by Zone 2, then Zone 3, and so on. The next snow event, Zone 2 will be cleared first, and Zone 1 will be cleared last. Each Zone will be cleared entirely, including pathways and lanes, to facilitate delivery of our contracted solid waste and recycling services, and to allow lane access to residences with no other alternatives available. If snow clearing occurs on the same day as residential waste/recycling pickup, residents should place waste carts in the center of their driveway. Windrows left within residential driveways will be cleaned up with municipal equipment as best as possible, leaving behind a Windrow of at least 4-6 inches (10-15 cm).

3.9 Public Notification

3.9.1 Snow removal signs will be put out a minimum of 24 hours prior to a particular street being cleared to ensure that residents are notified of the parking restrictions related to snow removal. Residents are required to remove all vehicles from the roadway when required and are subject to ticketing and towing. In addition to moving vehicles, residents must remove driveway gutter ramps; the municipality will not be liable for damaged or missing ramps. Any damage to municipal equipment caused by driveway gutter ramps is the homeowner's responsibility under the Traffic Safety Bylaw.

3.10 General Methodology

3.10.1 Roads with boulevards or medians may be utilized for snow storage. Snow will be removed where no space is available, where traffic safety is impacted, or at the discretion of the General Manager of Community and Infrastructure Services or designate.

3.10.2 Windrows will be utilized within streets for the purpose of preparation in advance of removal. Windrows will be targeted for removal within 3 business days. Windrows along the centerline shall be cleared immediately at intersections and, normally, within 72 hours.

3.11 Emergency Situations

3.11.1 During Extreme Cold Weather events (-30°C Windchill temperature or colder), the General Manager of Community and Infrastructure Services or designate will pause snow and ice control work to prevent damage to equipment and protect the safety of employees.

- 3.11.2 In the event Morinville resources cannot manage service levels for snow removal, including after an extreme winter storm that causes impasses of significant portion of the transportation network, the General Manager of Community and Infrastructure Services or designate may at that time extend the hours for snow removal or hire contractors to assist until such time employees are once again self-sufficient and capable of sustaining operations.
- 3.11.3 General holidays and weekends are monitored by the Infrastructure Services department's on-call employees. Additional employees will be called in for snowfall events exceeding 10 cm, as required and at the discretion of the General Manager of Community and Infrastructure Services or designate.
- 3.11.4 When extraordinary road conditions cause the impasse of a significant portion of the transportation network or when operational requests, such as special events, may dictate, additional snow removal service may be approved on a case-by-case basis by the General Manager of Community and Infrastructure Services or designate.
- 3.11.5 Snow may be removed from specific streets, roadways or areas in advance of the spring thaw to reduce or avoid potential flooding.

3.12 Snow Dump

- 3.12.1 Morinville will permit contractor use of the snow dump for snow removal activities within Morinville or to other parties as determined by the General Manager, Community and Infrastructure Services or designate. Morinville will adopt a cost-recovery model for contractor use of the snow dump, with charges outlined in the Fees and Charges Bylaw.
- 3.12.2 The General Manager, Community and Infrastructure Services or designate, may close the snow dump to contracted use at any time for any reason, including but not limited to, safety concerns, environmental concerns, storage capacity limitations, improper use, or lack of oversight capacity. No compensation will be paid to external users for any loss of snow dump use.

4.0 Review Date

- 4.1 For the purposes of ensuring that this Policy is revised for ongoing relevance and necessity, a review will occur prior to January 13, 2030. The Policy shall be brought forth and repassed in its present or amended form or rescinded.
- 4.2 This Policy shall remain in effect if the review date passes prior to Council review.

SECTION B

1.0 Reference to other Policy and Legislation

Traffic Safety Bylaw

Community Standards Bylaw

Fees and Charges Bylaw

2.0 Persons Affected

Residents and businesses within the Morinville limits.

3.0 Review/Revision History and Author

Snow and Ice Control Council Policy CP5/2024

Snow and Ice Control Council Policy CP208/2022

Snow and Ice Control Policy PWAI/2020

Snow and Ice Control Policy PWAI/2018

Snow and Ice Control Policy PWAI/2017

Snow and Ice Control Policy PWAS/2013

Snow and Ice Control Policy PWA2/2011

Winter Road Maintenance Policy 200/2009

Winter Road Maintenance Policy 200/2007

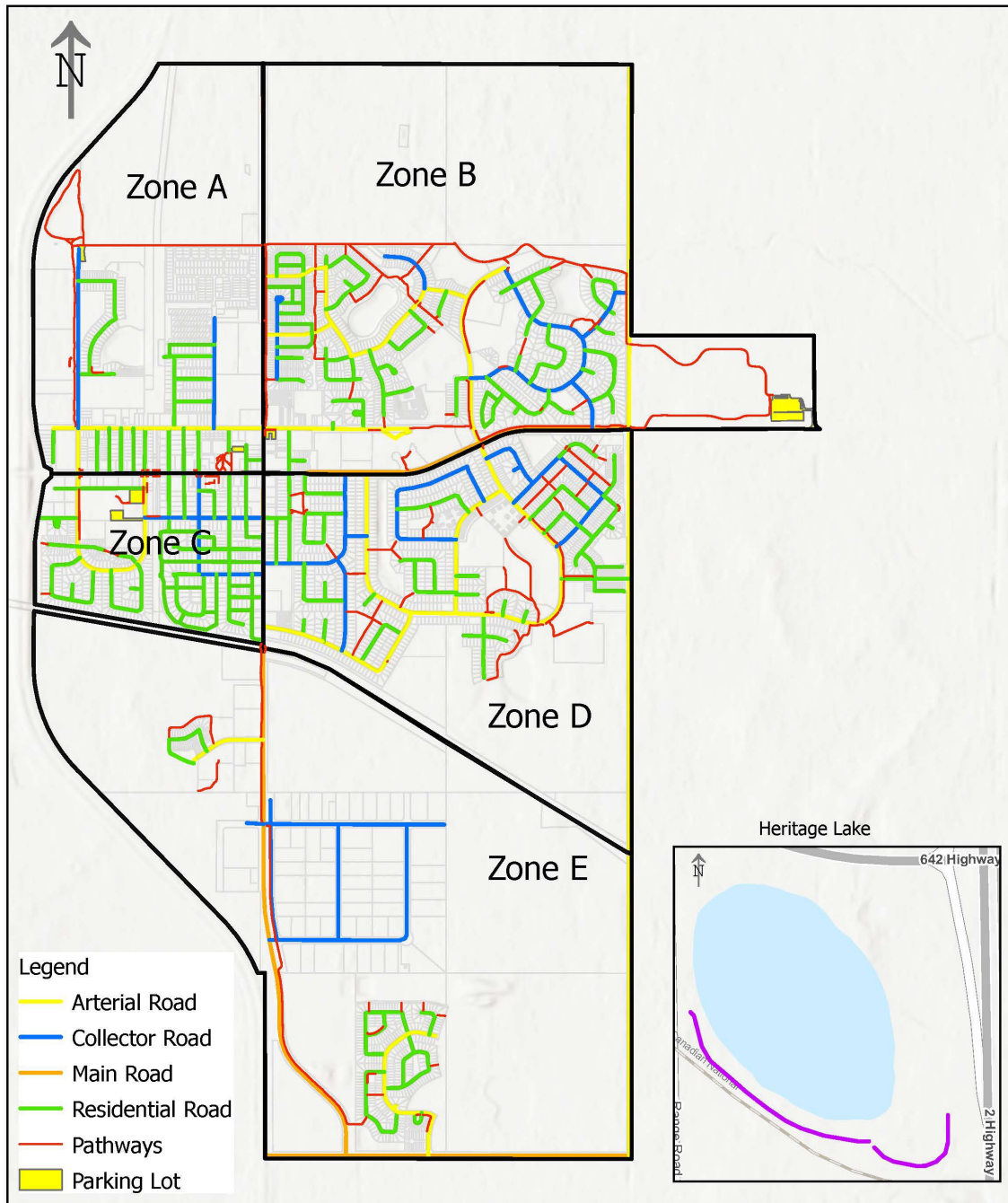
Original Signed

Simon Boersma
Mayor

Original Signed

Michelle Hay
Chief Administrative Officer

APPENDIX 1— Snow Priority and Zone Map



Snow Clearing Zones

Revised December 2025

