

Administrative Policy



Snow and Ice Control Policy

Policy Number: PWA1/2020

Approval Date: September 15, 2020

Supersedes Policy: PWA1/2018

SECTION A

1.0 Policy Purpose

- 1.1 To establish consistent and systemic service levels within Council's approved budget parameters.
- 1.2 Snow and ice control shall be managed within specified service levels standards and priorities to provide motorists and pedestrians with roads, sidewalks and parking lots that are as safe as reasonably possible.
- 1.3 Budget, available equipment and resources, and extreme weather conditions may impact service levels.
- 1.4 Depending on road conditions, a fair and equitable approach to residential snow removal shall be established through an alternating pattern of snow removal from the 5 zones indicated (see enclosed map).

2.0 Definitions

- 2.1 **"Municipal Parking lots"** are Town-owned or leased parking lots that provide support to the public, Town staff, and community agencies.
- 2.2 **"Main Roads"** refer to 100 Street from the north to south boundary and 100 Avenue extending from the east to west boundary of the Town.
- 2.3 **"Arterial Roads"** refer to major thoroughfares through the Town.

- 2.4 **“Collector Roads”** refer to roads which connect residential neighbourhoods together and also includes the industrial area.
- 2.5 **“Residential Roads”** refer to residential neighbourhood streets.
- 2.6 A **“windrow”** is a pile of snow on the side of road or along the centerline of a road that was created by snow plowing equipment. Windrows along the centerline shall have intersections cleared immediately and shall normally be cleared within 48 hours.

3.0 Policy Statements

- 3.1 Snow control operations will be initiated as follows:
 - 3.1.1 For accumulations of snow between 0 and 5 cm, and/or during icy road conditions, sanding of key intersections and removal of hazardous snow drifts on main roads will occur. The service target for completion is 8 hours.
 - 3.1.2 For accumulations of snow between 5 and 10 cm, all main and arterial roads will be plowed, emergency routes (RCMP, fire station, EMS) will be plowed, and Town facility parking lots will be cleared. The service target for completion is 24 hours.
 - 3.1.3 For accumulations of snow between 10 and 15 cm, all neighbourhood collector roads will be cleared. The service target for completion is 72 hours.
 - 3.1.4 For accumulations of snow over 15 cm, residential snow clearing operations will begin. The service target for completion is 5 days (one day per zone).
 - 3.1.5 Should a second snowfall occur prior to the completion of initial snow clearing operations, the service target start time will reset.

- 3.2 Snow Removal Priorities, based on snow events, are defined as follows:

Priority #1: Main Roads (orange lines on enclosed map)

Consists of 100 Street and 100 Avenue. Trails and sidewalks (red lines) adjacent to Town owned properties (Civic Place, MCCC, Public Works, St. Jean Baptiste Park, Firehall bay access) will be cleared concurrently within this priority level while using specific equipment. Municipal parking lots will be cleared and snow pushed into piles which will be removed after the snow event and once all other priorities have been completed or as time permits.

Priority #2: Arterial Roads (yellow lines on enclosed map)

Once the main roadways have been completed, arterial roads will be cleared. Where possible, snow will be pushed where space is available, including to the side of the road that does not have a sidewalk, or both sides of the road if there is a boulevard between the sidewalk and the curb.

Priority #3: Neighbourhood Collectors (blue lines on enclosed map)

Neighbourhood collector roads including the industrial park will be cleared to facilitate the movement of vehicles towards arterial roads. Where possible, snow will be pushed where space is available, to the side of the road that does not have a sidewalk, or both sides of the road if safe to do so.

Priority #4: Residential Streets / Lanes (green lines on enclosed map)

Once the main roads and arterial roads have been completed, residential roads will be cleared according to the zones outlined on the enclosed map. The Town of Morinville has been divided up into five zones which are scheduled on a rotating basis. For example, zone 1 will be the first zone cleared, followed by zone 2 and so on. The next snow event, zone 2 will be cleared first and zone 1 will be cleared last. Each zone will be cleared entirely including pathways and lanes in order to facilitate our contracted solid waste and recycling service delivery as well as facilitate lane access to residences without other alternatives. Should snow clearing occur on the same day as residential waste/recycling pick up, residents should place waste carts in the centre of their driveway. Windrows left within residential driveways will be cleaned-up with municipal equipment as best as possible leaving behind a windrow of no less than 4-6 inches.

- 3.3 Snow Removal signs will be put out a minimum of 24 hours prior to a particular street being cleared so residents are notified of the parking restrictions related to snow removal. Residents are required to remove all vehicles from the roadway when required and are subject to ticketing and towing. In addition to moving vehicles, residents are also required to remove driveway gutter ramps as the Town will not be liable for damaged or missing ramps. Any damage to Town equipment caused by driveway gutter ramps will be the responsibility of the homeowner as per Traffic Bylaw 24/2012.
- 3.4 Snow will be removed where no space is available, where traffic safety is impacted, or at the discretion of the General Manager of Community and Infrastructure Services or designate.

- 3.5 In the event Town resources cannot manage service levels for snow removal, the General Manager of Community and Infrastructure Services or designate may at that time extend the hours for snow removal or hire contractors to assist until such time staff is once again self-sufficient and capable of sustaining operations.
- 3.6 General holidays and weekends are monitored by the Public Works department on-call staff. Extra staff will be called in for accumulations over 10 cm as required and at the discretion of the General Manager of Community and Infrastructure Services or designate.
- 3.7 Operational requests such as special events may dictate additional snow removal service required and will be approved on a case-by-case basis by the General Manager of Community and Infrastructure Services or designate.
- 3.8 Snow may be removed from specific streets, roadways or areas in advance of spring thaw in order to reduce or avoid potential flooding.

4.0 Expiry Date

- 4.1 For the purpose of ensuring this Policy is reviewed for ongoing relevancy and necessity, with the option that it may be repassed in its present or an amended form following a review, this policy expires December 31, 2022.
- 4.2 This policy shall remain in effect if the review date passes prior to formal review.

SECTION B

1.0 Reference to other Policy and Legislation

Traffic Bylaw 24/2012
Community Standards Bylaw 5/2019

2.0 Persons Affected

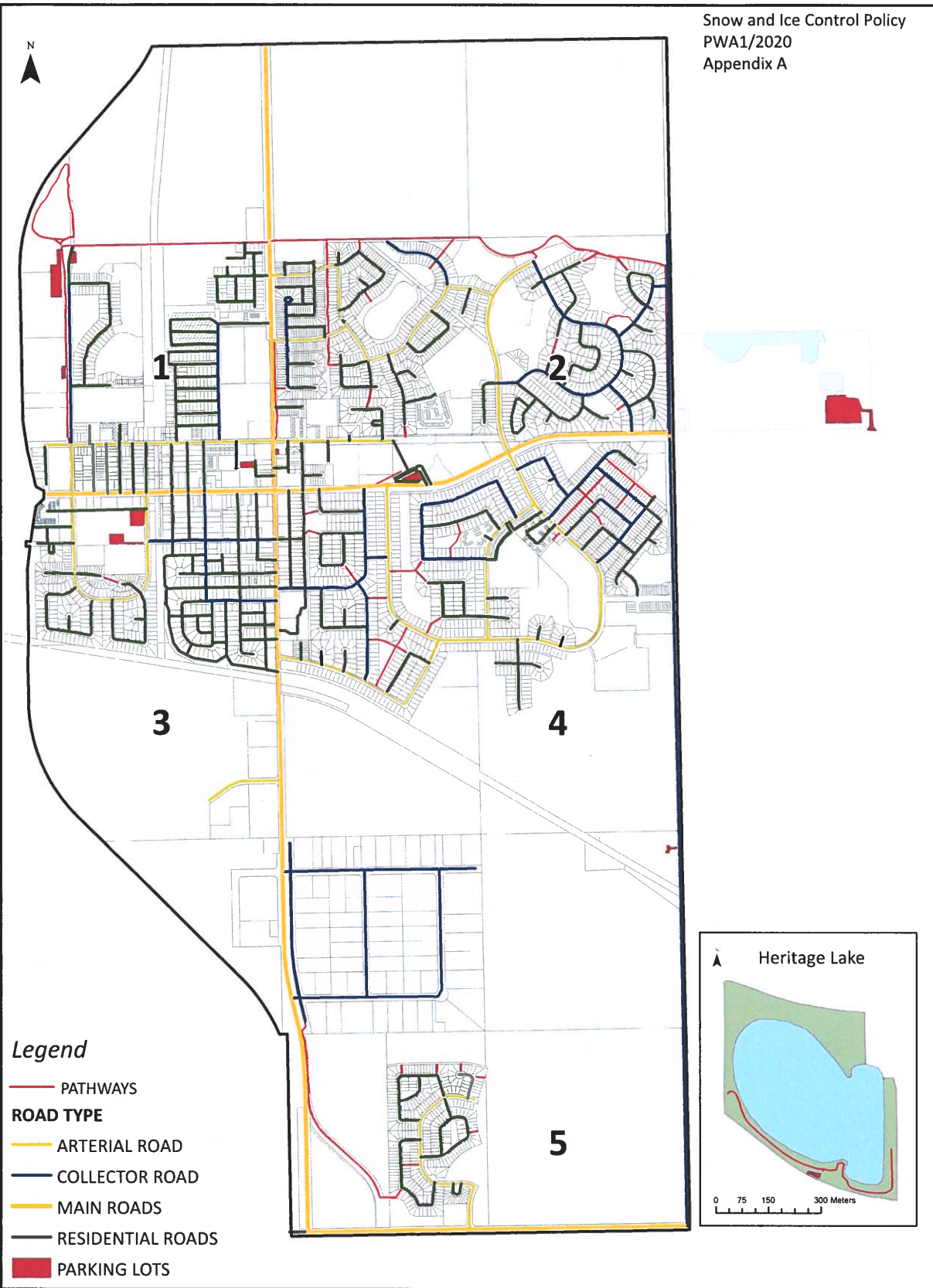
Residents and businesses within the Town of Morinville limits.

3.0 Review / Revision History and Author

Snow and Ice Control Policy PWA1/2018
Snow and Ice Control Policy PWA1/2017 (Rescinded November 19, 2018)
Snow and Ice Control Policy PWA5/2013 (Rescinded November 8, 2017)
Snow and Ice Control Policy PWA2/2011 (Rescinded November 18, 2013)
Winter Road Maintenance Policy 200/2009 (Rescinded January 13, 2012)
Winter Road Maintenance Policy 200/2007 (Rescinded November 24, 2009)

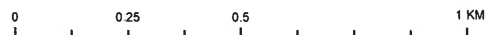


Stéphane Labonne
Chief Administrative Officer



Snow Plowing Priority

Revised September 2020



Scale 1:15,000

Coordinate System : NAD 1983 10TM AEP Resource

ALL RIGHTS RESERVED. NO PART OF THIS MAP MAY BE REPRODUCED IN ANY FORM OR BY ANY MEANS WITHOUT THE WRITTEN CONSENT OF THE TOWN OF MORINVILLE. THE TOWN OF MORINVILLE PROVIDES THIS INFORMATION IN GOOD FAITH, BUT PROVIDES NO WARRANTY NOR ACCEPTS ANY LIABILITY ARISING FROM INCOMPLETE, INACCURATE OR MISLEADING INFORMATION. INFORMATION IS MAINTAINED ON A REGULAR BASIS. BASE MAP IN PART BY THE RESOURCES DATA DIVISION, ENVIRONMENTAL PROTECTION, GOVERNMENT OF ALBERTA. DISTRIBUTED UNDER LICENCE TO THE SPATIAL DATA WAREHOUSE. © COPYRIGHT 2020 ALBERTA



CAO: